

# Industry recommendations for Group ABDF and Group H cultivars for 2020

Nic Perndt

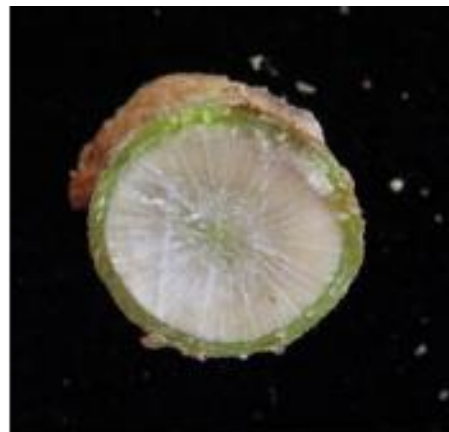
Steve Marcroft, Angela Van de Wouw, Susie Sprague, Kurt Lindbeck,  
Andrew Ware, Andrea Hills, Andrew Wherrett and Alex Idnum

# Representative cultivars from each resistance group are sown at each monitoring site

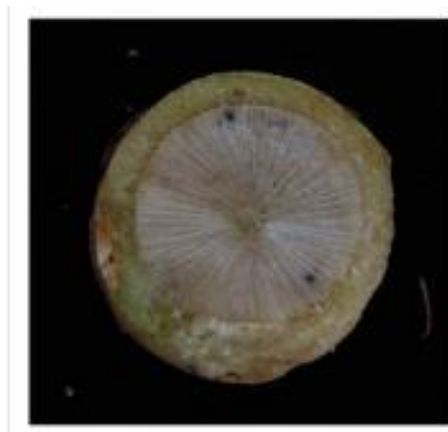
- 36 monitoring sites across the country
- Disease assessed at the end of the year



# Average internal infection used to assess disease severity



0%



5%



40%



60%

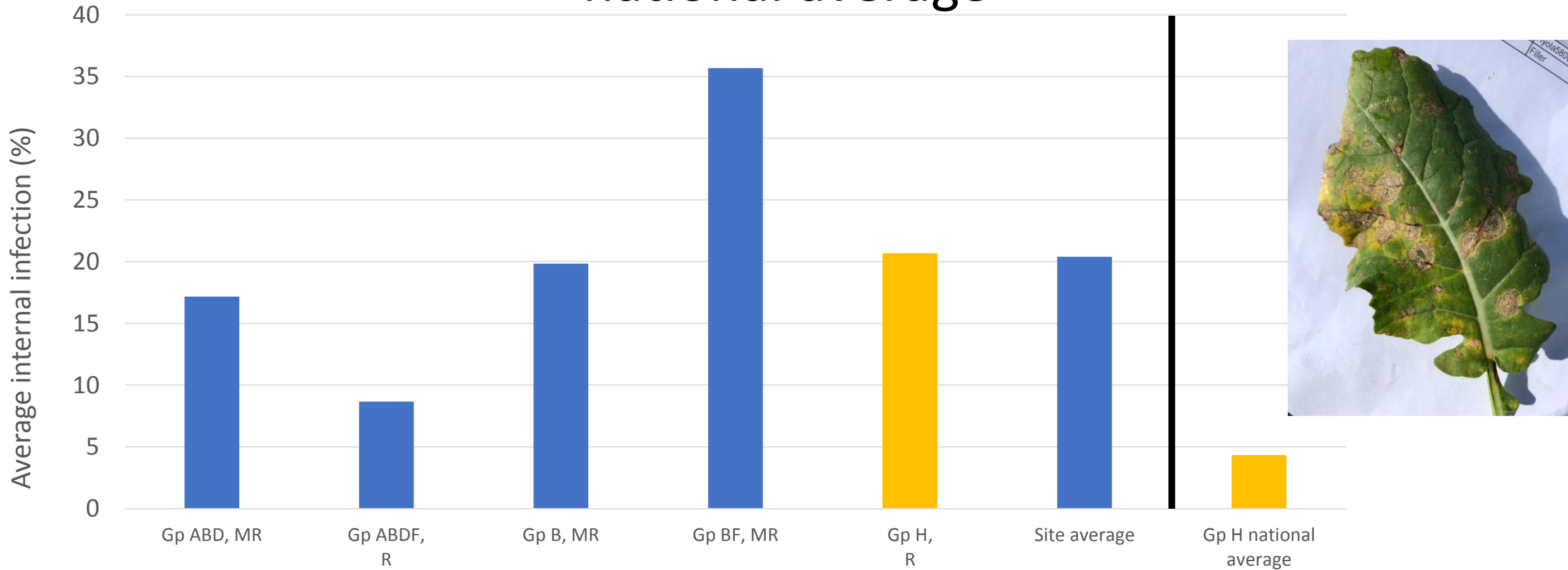


80%



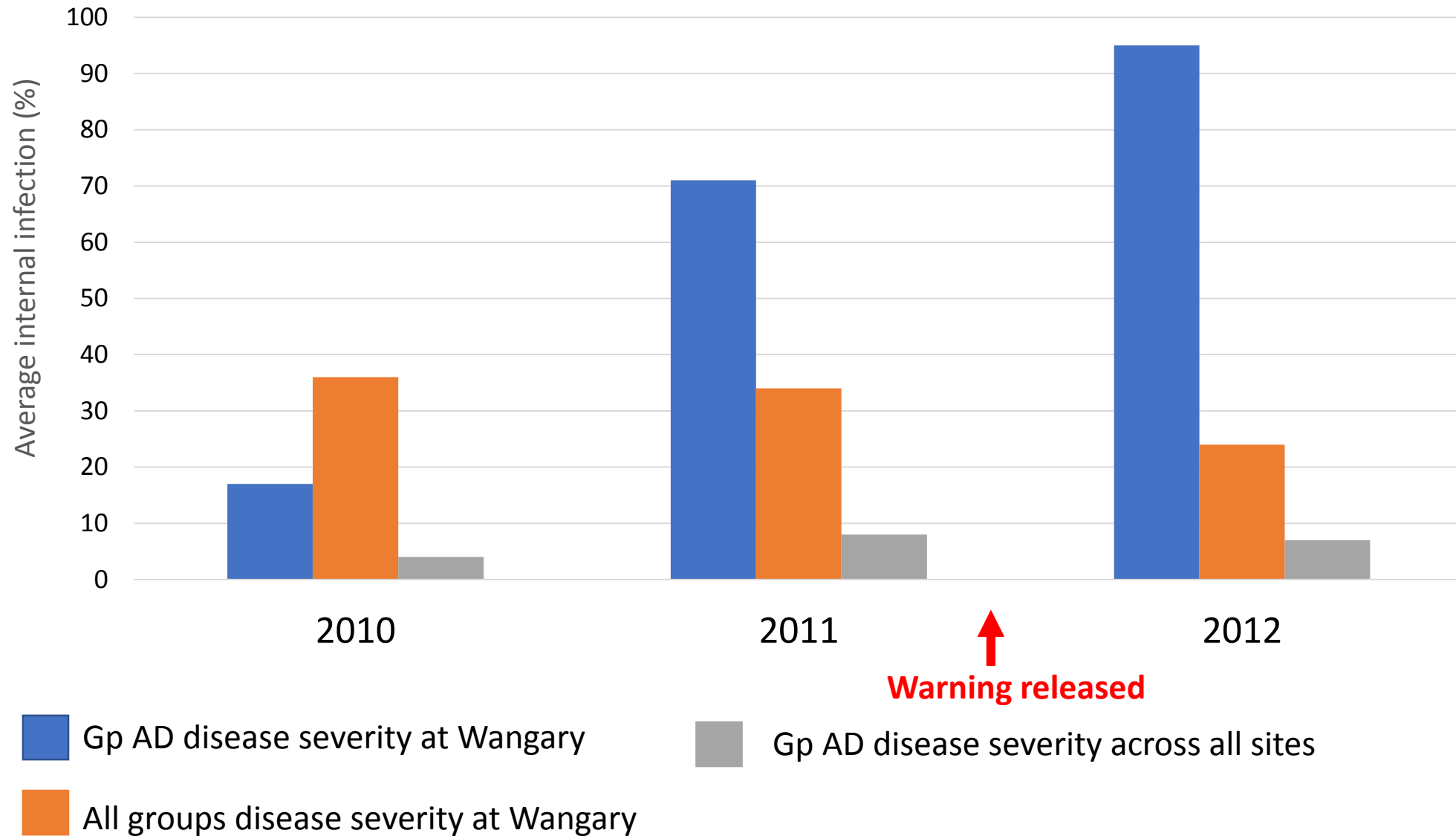
100%

# Group H at Yeelanna, E.P. 2019 – 4x higher disease than national average

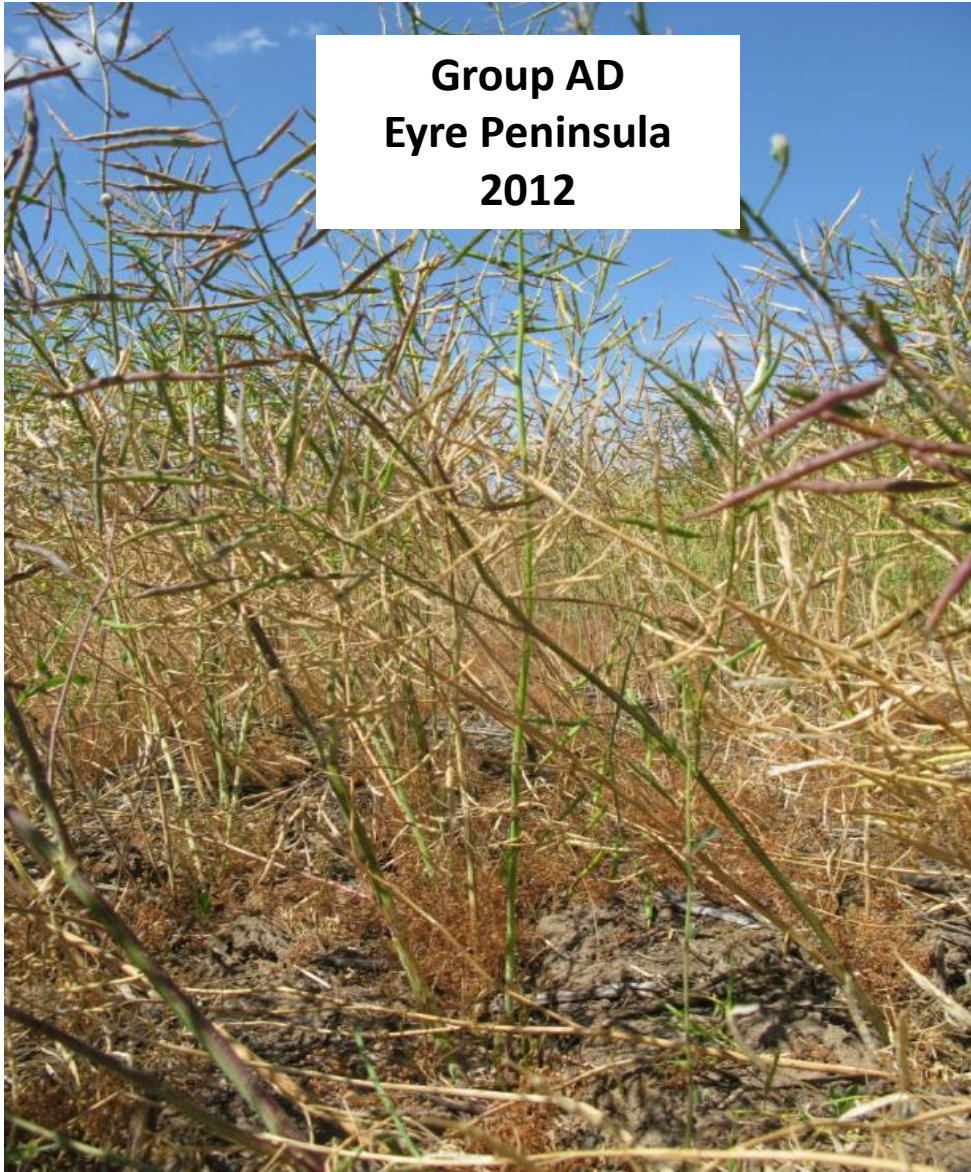


- 2019 was 1<sup>st</sup> year of monitoring (expected to see low disease)
- Higher disease than ABD and ABDF

# Group AD resistance breakdown at Eyre Peninsula, SA



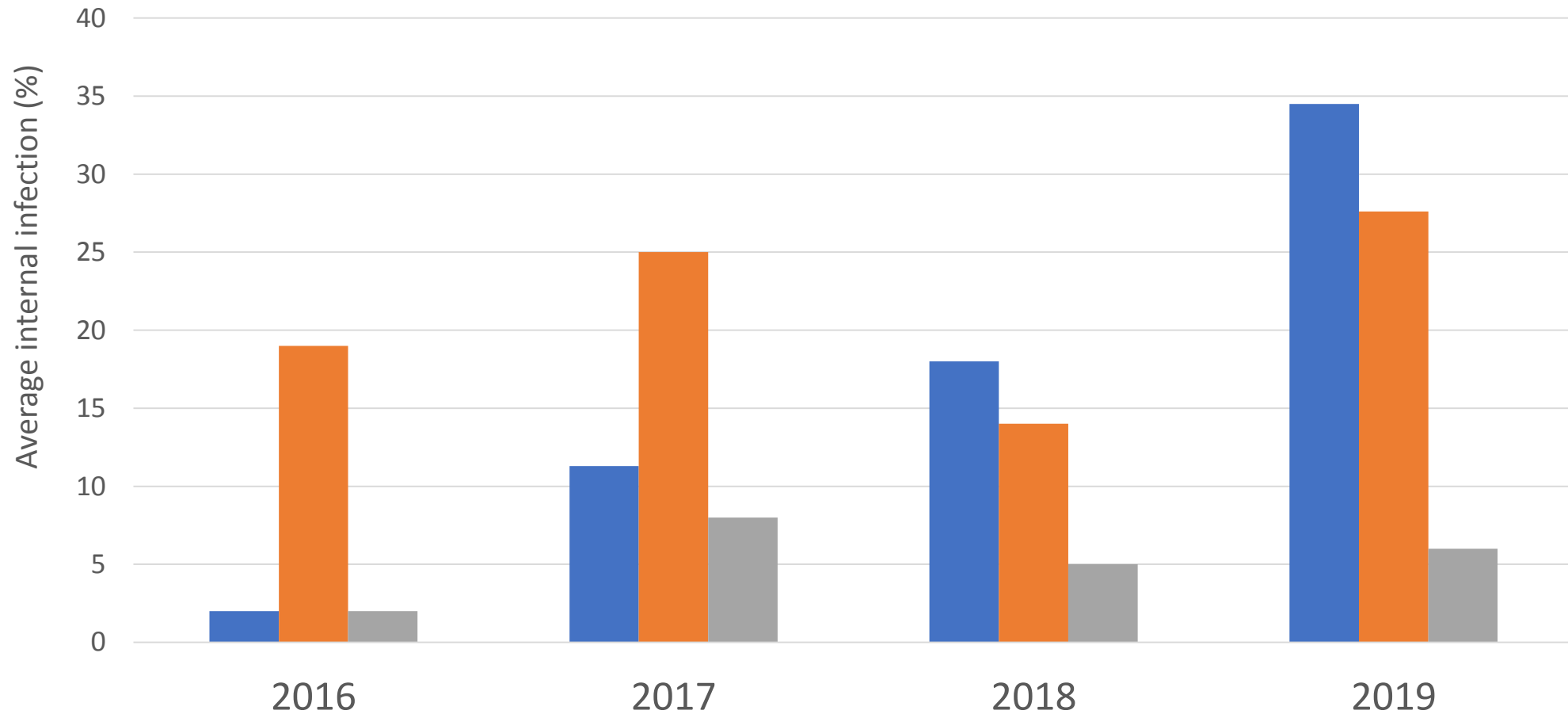
**Group AD  
Eyre Peninsula  
2012**





**Group AD  
Wagga Wagga, NSW  
2012**



# Increasing disease severity in Group ABDF – Lake Bolac, Vic



 Gp ABDF disease severity at Lake Bolac  
 All groups disease severity at Lake Bolac

 Gp ABDF disease severity at all sites

# Potential industry recommendations

- Based on 2019 data, the recommendation will be orange (medium) risk warning for Group ABDF for Lake Bolac.
  - Should we put out some targeted information regarding monitoring of these cultivars in 2020?
- We don't know if Group ABDF has quantitative resistance to back it up. (Group AD did not)
- In 2020 we will continue to monitor the R groups at all sites.