

2021 Season Update – Western Australia

living farm



2022 Canola Pathology Workshop

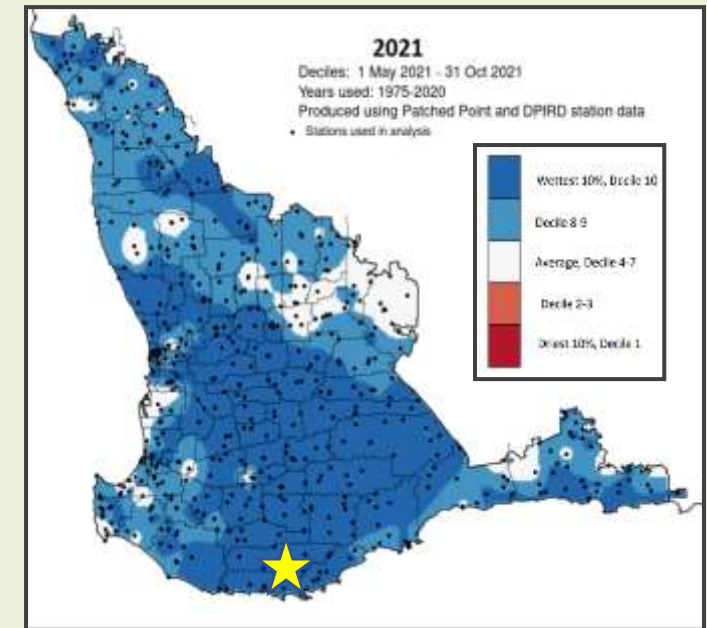


In pictures



Agronomy

- Very wet season. Lots of potential, plenty of \$\$ on offer.
 - Decisions heavily influenced by a once in a generation season.
 - Some of these during seeding → increased hectares.
 - Warm soil, good herbicide efficacy, trafficable in June.
- For the north and east – very successful canola growing season.
 - Early start (Cyclone Seroja) into moisture, excellent establishment almost no dry periods and a soft finish.
- South – too wet, particularly south coast.
- Canola well fed, and some farmers pushed boundaries they haven't previously.
 - The unlimiting nature of 2021 saw 50kg-N/ha/t-grain come true.



Disease

Early Downy Mildew in the south.

- Impacted throughout season.

Sclerotinia

- Was expected everywhere.
- Wasn't as serious as expected - sporadic
- Some basal infections.
- Rainfall/humidity requirements met.
- Temperature not.
 - July wet, but low maximum temperatures.
 - 3 days without cloud cover.
- Lots in lupins 2-4 weeks later.



Disease

Blackleg

- No big news on breakdown of genetics.
 - Grp B remains very vulnerable in the south.
- Significant infections climbing canopy prior to flowering.
 - Spray or not?
- Agronomists/growers bringing Sclerotinia sprays forward to 10% flowering for UCI.
- Growers experience supporting data on resistance – transfers to UCI.
 - Worst I've seen →→→→→

